

The **xepersian-hm** package
Fixing kashida in xepersian
User Documentation

Hossein Movahhedian*

Released 2020-09-04 v1.1a

HM:

HM is an initialism for “Hossein Movahhedian” – the author’s name and family.

*E-mail: dma8hm1334@gmail.com

Contents

1	Introduction	3
2	Brief outline of the issues	3
3	Package loading and options	4
4	Commands	10
5	Important notes	11
6	Acknowledgments	11
7	Change History	11
	[2020-03-17 v0.1]	11
	[2020-03-19 v0.2]	11
	[2020-03-23 v0.3]	11
	[2020-03-26 v0.4]	11
	[2020-04-20 v0.5a]	12
	[2020-04-26 v0.5b]	12
	[2020-05-01 v0.5c]	12
	[2020-05-07 v0.5d]	12
	[2020-05-12 v0.5e]	12
	[2020-05-20 v0.5f]	12
	[2020-05-31 v1.0a]	12
	[2020-06-04 v1.0b]	13
	[2020-07-20 v1.0c]	13
	[2020-08-05 v1.0d]	13
	[2020-09-04 v1.1a]	13
	Index	15

1 Introduction

[Kashida](#) is used in Persian and Arabic typography to justify the text regardless of the number of the words on the line by elongating characters at certain points instead of expanding spaces between words or individual letters.

Kashida feature in [xepersian](#) has problems with some fonts such as [HM Series](#)

The following files in the directory `texmf-dist/doc/xelatex/xepersian-hm/` can be used as simple examples of the usage of the package:

1. `xepersian-hm-glyph.tex`
See pages 26 – 35 for PDF output.
2. `xepersian-hm-leaders-glyph.tex`
See pages 36 – 45 for PDF output.
3. `xepersian-hm-leaders-hrule.tex`
See pages 46 – 55 for PDF output.

Please use the Bitbucket issue tracker: <https://bitbucket.org/dma8hm1334/xepersian-hm/issues> to report a bug, request a feature or if you have a comment.

I will do my best to fix all the bugs you report, but, unfortunately, time is a big hurdle to overcome; so, my apologies in advance for those which I cannot make time to fix.

2 Brief outline of the issues

Kashida is one of the most important features that must be included in any Persian typesetter. In `xepersian` this feature is implemented but with some problems. See pages 16 – 25 for pictorial illustrations for various font styles. These problems along with the fixes in `xepersian-hm` are briefly:

P-I In [xepersian overlapping of glyphs](#) occurs in letter combinations such as ”`ﻯ+ﺯ`”, ”`ﻯ+ژ`”, and ”`ﻯ+ﺰ`” because the character U+FEF0 (ARABIC LETTER FARSI YEH FINAL FORM) is replaced with another character. This is fixed by modifying the fixed part of the glue inserted between the consecutive characters. Furthermore, both, the fixed and the stretchable parts of the glue can be changed by the user.

P-II In [letter combinations](#) such as ”`ﻯ+ﻩ`”, in `xepersian`, the character U+FEEB (ARABIC LETTER HEH INITIAL FORM) is replaced with U+06BE (ARABIC LETTER HEH DOACHASHEMEE). This is fixed by inserting the character U+200E before the combination ”U+200D + `hrule` + U+200D” which is used as stretching item.

Note: [Vafa Khalighi](#) has fixed this problem in [xepersian-23.0](#), by copying the corresponding code from [xepersian-hm-0.5e](#). Consequently, the option `KashidaXBFix` along with the commands `\KashidaXBFixOn` and `\KashidaXBFixOff` has been removed in `xepersian-23.0` and the later versions.

With KashidaOn:	الله، جل جلاله، اكبر
With KashidaOff:	الله، جل جلاله، اكبر

Figure 1: Package: xepersian, Font: Noto Sans Arabic, Scale=1.1, Kashida=On

With KashidaOn:	الله، و اكبر به ترتيب خروجی \جلجلاله، \الله و \اكبر
With KashidaOff:	الله، و اكبر به ترتيب خروجی \جلجلاله، \الله و \اكبر

Figure 2: Package: xepersian-hm, Font: Noto Sans Arabic, Scale=1.1, Kashida=glyph

P-III In `xepersian` when outline or shadow fonts are used, the gaps filled by horizontal rule appears as a solid box. This is fixed by using the `kashida` glyph instead of the horizontal rule in `xepersian-hm`.

P-IV Activating `kashida` in `xepersian` disturbs [ligatures](#). This is fixed in `xepersian-hm` by escaping the components of the ligature which form the glyph, i.e. by inserting an escape character before Persian letters joined to form the ligature without any empty characters, blank characters, invisible characters and whitespace characters which form the glyph. See [Figures 1](#) and [2](#). Currently only 3 ligature glyphs are available in `xepersian-hm`, but you can add as many as you want or let me know the ligature glyphs that you need, so that I can add them in the next release of the package. Of course, this is not the best solution, but it works.

P-V If italic or oblique style of some fonts such as X Series 2 is used in `xepersian`, an extra `gap` is left between the stretched characters. This is fixed in HM Series fonts.

For comparing the outputs of `xepersian` and `xepersian-hm` with a variety of options available to these packages, please see the [Figures 3](#), [4](#), and [5](#).

3 Package loading and options

Please note that `xepersian-hm` loads `xepersian` automatically, so you may only pass options to the package using the command `\PassOptionsToPackage` before `\documentclass`. For example:

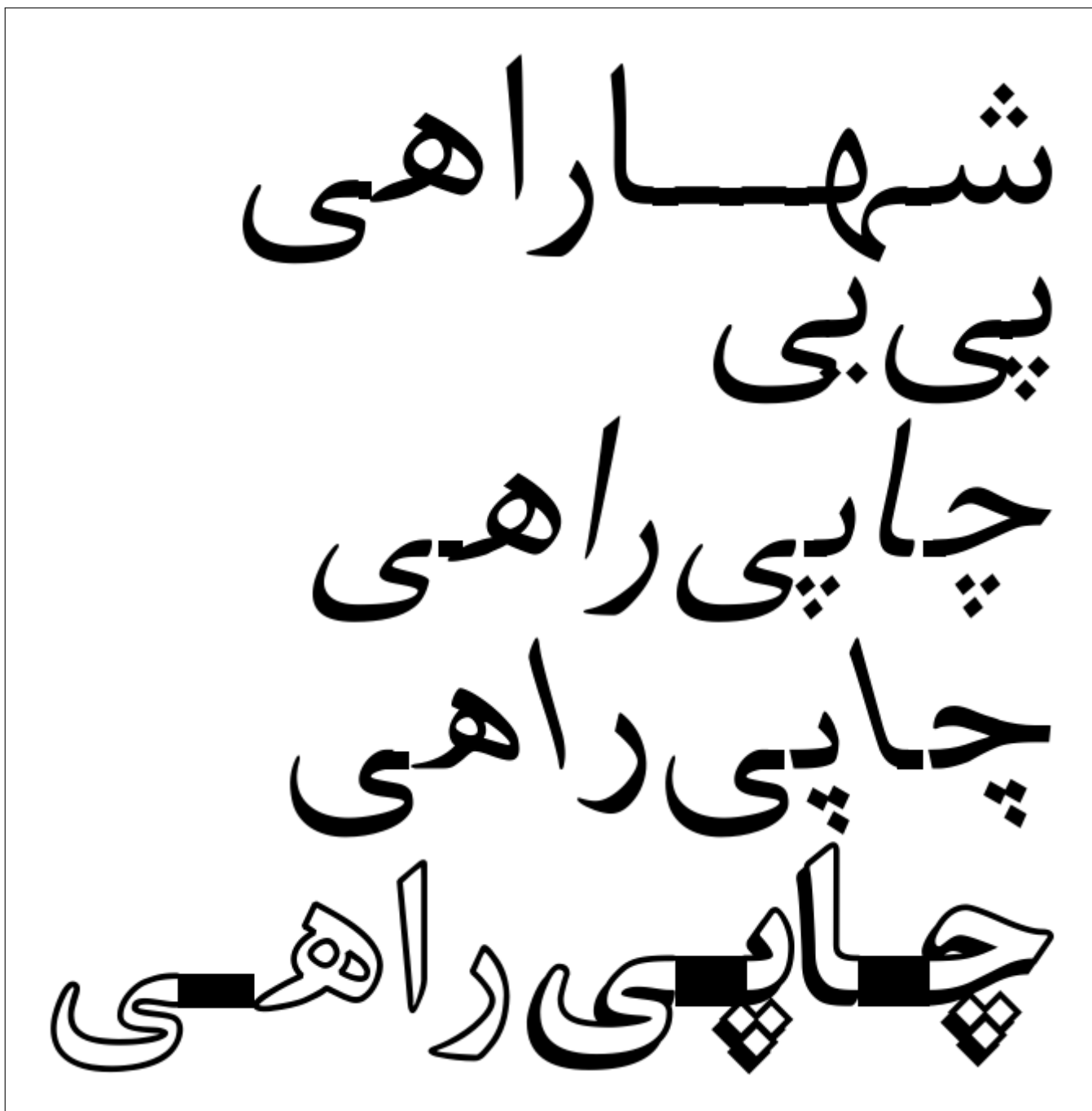


Figure 3: Package: xepersian, Font: XB Kayhan, Scale=4.5, Kashida=On

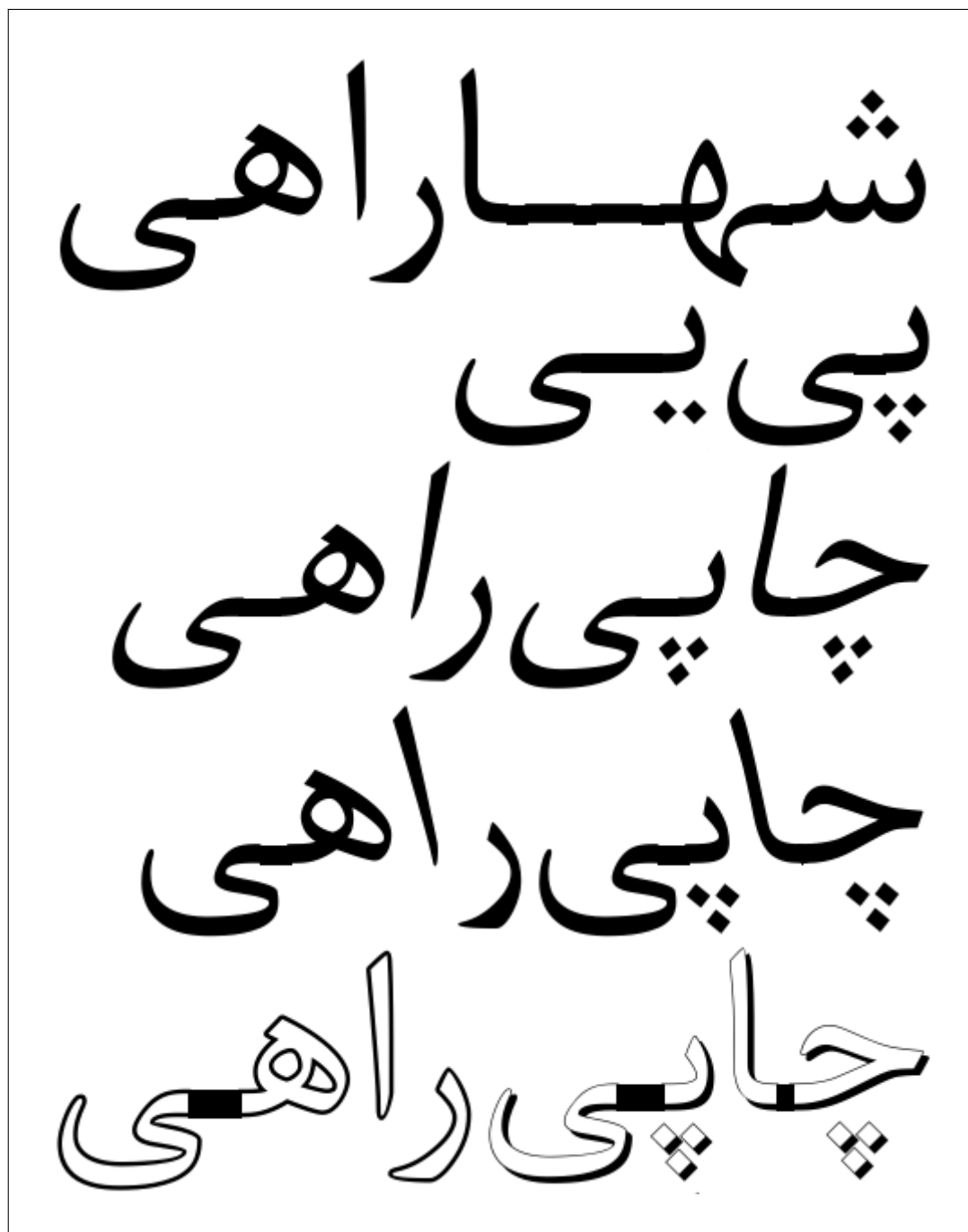


Figure 4: Package: xepersian-hm, Font: HM XKayhan, Scale=4.5, Kashida=hrule

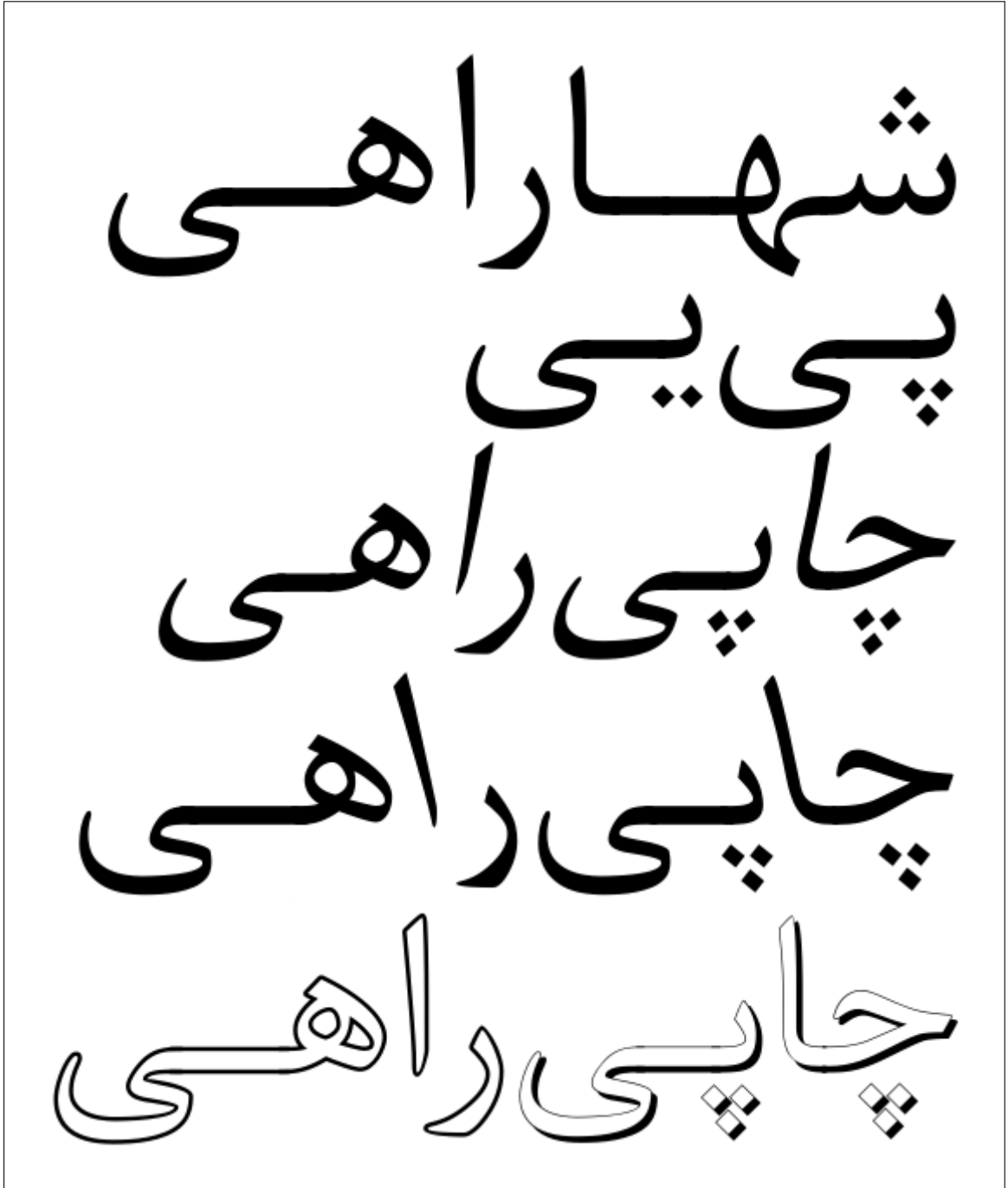


Figure 5: Package: xepersian-hm, Font: HM XKayhan, Scale=4.5, Kashida=glyph

```

\PassOptionsToPackage{debugfootnotedirection=off,localise=off}{xepersian}
\documentclass{report}
\usepackage{xcolor}
\usepackage[Kashida=leaders+glyph,kashidastretch=0.14 em plus 0.5 em]{xepersian-hm}

```

The options available in xepersian-hm are:

- **Kashida:**
which implements kashida feature with three possible values:

- **glyph:**
which uses the `kashida` character to stretch the text.

With this option you should run `xelatex` thrice. For example:

Important notes for X_QL^AT_EX users:

- * If you are going to use this option then you should run `xelatex` thrice. For example:

```

rm -f kashida-example.aux
xelatex kashida-example.tex
xelatex kashida-example.tex
xelatex kashida-example.tex

```

- * This feature is still experimental in X_QL^AT_EX and is not regarded as stable, so, if you are going to use this option be ready for unpredictable results.
- * With this option, for each gap which is to be filled with kashida, some commands, current position on the page, and references are saved in the `\jobname.aux` file and if the text is long, the file size may get too large.

- **leaders+glyph:**
which uses kashida glyph leaders to stretch the text. Please note that the option ‘Kashida=leaders+glyph’ is currently only supported by HM Series fonts available at <https://dma8hm1334.bitbucket.io>. If you know of any other font that supports this option, please let me know to add it to the list of corresponding fonts.

Contrary to the option `Kashida=glyph`, in this case nothing is saved in `.aux` files.

- **leaders+hrule:**
which uses horizontal rule (`\hrule`) leaders to stretch the text.
- **Off:**
which disables kashida feature.

- `On`:
which is the same as `leaders+glyph`.

Also, please note that the value of `Kashida` is mandatory. For example `Kashida=glyph` inserts a stretched `kashida` glyph and `Kashida=leaders+glyph` inserts `kashida` leaders wherever it is needed.

- `linebreakpenalty`:
which specifies the amount of penalty for preventing bad line-breaking. You may strictly specify the value of this option. For example you may either set '`linebreakpenalty=8`' or use the default values. The available default values of penalties which are put into the horizontal list output are the negative of the followings:

<code>min:</code>	0
<code>low:</code>	8
<code>medium:</code>	15
<code>high:</code>	25
<code>max:</code>	10000

- `ligatures`:
which fixes the disturbance of ligatures caused by activation of `kashida` in `xepersian`. You may strictly specify the value of this option. For example '`ligatures=dlig`' or you may use the default value. The available values are:

<code>aalt:</code>	Access All Alternatives
<code>ccmp:</code>	Glyph Composition/Decomposition
<code>dlig:</code>	Discretionary Ligatures
<code>finn:</code>	Final (Terminal) Forms
<code>init:</code>	Initial Forms
<code>locl:</code>	Localized Forms
<code>medi:</code>	Medial Forms
<code>rliq:</code>	Required Ligatures
<code>default:</code>	All the above features

Please note that this feature is still experimental and is not regarded as stable.

- `color`:
which colorize the stretched parts of the text for checking the quality of `kashida` justification. Color must be one of a named color declared in `xcolor` package. For example: `color=blue` or `color=Blue`.
Default color name is: `magenta`
Please note that activating this option increases system resource and disk usage.

- `kashidastretch`: which specifies the amount of extra stretching for some combinations of characters. You may strictly specify the value of this option. For example `'kashidastretch=0.14 em plus 0.5 em'` or you may use the default values. The available default values are:

kayhan	0.14 em plus 0.5 em
khorranshahr	0.131 em plus 0.5 em
kayhannavaar	0.129 em plus 0.5 em
kayhanpook	0.133 em plus 0.5 em
kayhansayeh	0.135 em plus 0.5 em
khoramshahr	0.128 em plus 0.5 em
khorranshahr	0.13 em plus 0.5 em
niloofar	0.132 em plus 0.5 em
paatch	0.127 em plus 0.5 em
riyaz	0.125 em plus 0.5 em
roya	0.142 em plus 0.5 em
shafigh	0.143 em plus 0.5 em
shafighKurd	0.126 em plus 0.5 em
shafighUzbek	0.123 em plus 0.5 em
shiraz	0.122 em plus 0.5 em
sols	0.124 em plus 0.5 em
tabriz	0.119 em plus 0.5 em
titr	0.12 em plus 0.5 em
titre	0.121 em plus 0.5 em
traffic	0.124 em plus 0.5 em
vahid	0.134 em plus 0.5 em
vosta	0.136 em plus 0.5 em
yaghut	0.138 em plus 0.5 em
yagut	0.137 em plus 0.5 em
yas	0.126 em plus 0.5 em
yekan	0.141 em plus 0.5 em
yerhook	0.139 em plus 0.5 em
zar	0.116 em plus 0.5 em
ziba	0.119 em plus 0.5 em
default	0.14 em plus 0.5 em
noskip	0 em plus 0.5 em

For example: `'kashidastretch=titr'` is equivalent to `'kashidastretch=0.12 em plus 0.5 em'`

4 Commands

`\KashidaOff`:

disables kashida justification.

`\KashidaOn`:

enables kashida justification. If the option `Kashida` is activated stretching the text is the default behavior.

`\discouragebadlinebreaks` [`linebreakpenalty`] [`kashidastretch`] *{text}*:

text may not contain paragraph breaks. This command puts a penalty after each Persian word. The optional arguments `linebreakpenalty` and `kashidastretch` locally specify the value of the penalty and the amount of extra stretching for some combinations of characters respectively as discussed previously. For example you may set this option as follows:

```
\discouragebadlinebreaks[9][0.12 em plus 0.5 em]{...}
```

5 Important notes

Kashida and ligatures:

The method used to implement kashida feature breaks a ligature if it is applied to the letters which are joined to form the ligature. This is fixed in `xepersian-hm`, but it is not well developed yet.

6 Acknowledgments

In the first place I have to thank Donald Knuth for inventing TeX. During the development of this package I referred to Stack Exchange network of question-and-answer (Q&A) websites to solve problems for which I am grateful. I also would like to thank the developer teams of TeX's friends especially LaTeX, LuaTeX and XeTeX teams.

7 Change History

2020-03-17 v0.1

- First standalone version.

2020-03-19 v0.2

- Some minor changes.

2020-03-23 v0.3

- Added documentation

2020-03-26 v0.4

- Added DTX and INS files

2020-04-20 v0.5a

- Added `Kashida=glyph` to the package options
- Added `\discouragebadlinebreaks` to prevent bad line breaks in a text (less than a paragraph).

2020-04-26 v0.5b

- If the kashida glyph is used to stretch the text, then the main font is checked for availability of the kashida character.
- Two optional arguments added in `\discouragebadlinebreaks` macro.

2020-05-01 v0.5c

- The documentation is divided into two parts: User documentation and Source code documentation.
- The example file is divided into two parts: An example for the option `Kashida=glyph` and the other one for `Kashida=hrule`.

2020-05-07 v0.5d

- Added a new section to the user documentation titled: Brief outline of the issues.
- An error is triggered if the value of `Kashida` option is not specified.

2020-05-12 v0.5e

- Disturbance of ligatures caused by activation of kashida is fixed.

2020-05-20 v0.5f

- Reduced the length of items created by `zref` package in `\jobname.aux` file.
- If the option `Kashida=glyph` is used, a warning message is added to the log file which emphasizes that the option is experimental.

2020-05-31 v1.0a

- The option `'Kashida=hrule'` is changed to `'Kashida=leaders+hrule'`.
- The option `'Kashida=leaders+glyph'` is added. Since with this option kashida glyph leaders are used to stretch the text, nothing is saved in `.aux` files.

2020-06-04 v1.0b

- Added two options `Kashida=On` and `Kashida=Off`.

2020-07-20 v1.0c

- Fixed the problem with the option `ligatures=default`.

2020-08-05 v1.0d

- In the new version of LaTeX3, the name of some of the XeTeX control sequences has changed. These changes are applied in this version of `xepersion-hm`.

2020-09-04 v1.1a

- Added the `color` option.
- Added a few sections to the User Documentation.
- Split the file containing `kashida` code.

To Do's

To do

References:

Actually, this is not a "References" nor a "Literature", but the most important although not a complete list of "Resources Used" to develop this package.

- [1] Donald E. Knuth, *The T_EX book*, Addison-Wesley, 1986.
- [2] Victor Eijkhout, *T_EX BY TOPIC*, Addison-Wesley, 2013.
- [3] Paul W. Abrahams, Kathryn A. Hargreaves, and Karl Berry, *T_EX for the Impatient*, Addison-Wesley, 2013.
- [4] Leslie Lamport, *L^AT_EX, A document preparation System*, Addison-Wesley, 1986.
- [5] Frank Mittelbach and Michel Goossens with Johannes Braams, David Carlisle, and Chris Rowley, *The L^AT_EX Companion*, Addison-Wesley, second edition, 2004.
- [6] Package `latex`: The LaTeX Team, *The L^AT_EX 2_ε Sources*, [CTAN:macros/latex/base/source2e.pdf](https://ctan.org/ctan-archive/macros/latex/base/source2e.pdf), 2020-02-02

- [7] Package `l3kernel`: The LaTeX3 Team, *The L^AT_EX3 Sources*, [CTAN:macros/latex/contrib/l3kernel/source3.pdf](#), 2020-07-17
- [8] Package `l3kernel`: The LaTeX3 Team, *The L^AT_EX3 Interfaces*, [CTAN:macros/latex/contrib/l3kernel/interface3.pdf](#), 2020-07-17
- [9] Package `xetexref`: Will Robertson, Khaled Hosny, and Karl Berry, X_ƎT_EX reference guide, [CTAN:info/xetexref/xetex-reference.pdf](#), 2019-12-09
- [10] Package `xetex`: Jonathan Kew, About X_ƎT_EX, [CTAN:systems/doc/xetex/XeTeX-notes.pdf](#), 2005-10-17
- [11] Package `xetex`: Michel Goossens, The X_ƎT_EX Companion, <http://xml.web.cern.ch/XML/lgc2/xetexmain.pdf>, 2009-08-19
- [12] Website: Stack Exchange: Hot Questions, T_EX-L^AT_EX Q&A for users of TeX, LaTeX, ConTeXt, and related typesetting systems, tex.stackexchange.com

Index

color, 9

Commands

- `\KashidaOff`, 10
- `\KashidaOn`, 11
- `\discouragebadlinebreaks`, 11

gap, 4

Kashida, 3

kashidastretch, 10

leaders+glyph, 8

leaders+hrule, 8

letter combinations, 3

ligatures, 9

ligatures, 4

linebreakpenalty, 9

overlapping of glyphs, 3

Vafa Khalighi, 3

xepersian, 3

X_ƎPersian

Example of Use

Engine: XeTeX using xepersian

Kashida=leaders+hrule

File: TEXMFDIST/doc/latex/texnegar/xepersian-XB.tex

Font: XB Kayhan
Font Scale: 4.5
color: red

Engine: XeTeX using xepersian,
Style: Regular,
Kashida: Off

راهی جایی تابی چاپی
چاههی تلاشهایی شتابهایی
تابی چاپی راهی تلاشهایی
که کتابهایی که کلاههایی
که کتابهایی

Engine: XeTeX using xepersian,
Style: Regular,
Kashida: leaders+hrule On

راهی جایی تابی چاپی
چاهه‌هی تلاش‌هایی
شتاب‌هایی تابی چاپی
راهی تلاش‌هایی که
کتاب‌هایی که کلاه‌هایی
که کتاب‌هایی

Engine: XeTeX using xepersian,
Style: Italic,
Kashida: leaders+hrule On

راهی جای تابی
چاپی چاههی تلاشهایی
شتابهایی تابی
چاپی راهی تلاشهایی
که کتابهایی
که کلاههایی که
کتابهایی

Engine: XeTeX using xepersian,
Style: Oblique,
Kashida: leaders+hrule On

راهی جایابی تابی
چاپی چاهیی تلاشهایی
شتابهایی تابی
چاپی راهی تلاشهایی
که کتابهایی
که کلاههایی که
کتابهایی

Engine: XeTeX using xepersian,
Style: Outline,
Kashida: leaders+hrule On

راهی جایابی تابی
چاپی چاههی تلاشهایی
شتابهایی تابی
چاپی راهی تلاشهایی
که کتابهایی
که کلاههایی که
کتابهایی

Engine: XeTeX using xepersian,
Style: Sayeh,
Kashida: leaders+hrule On

راهی جایابی کتابی
چاپی چاههی قلاشهای
شتابهایابی کتابی
چاپی راهی قلاشهای
که کتابهایابی
که کلاشهایابی که
کتابهایابی

Engine: XeTeX using xepersian,
Style: Pook,
Kashida: leaders+hrule On

راهی جایابی تابیی
چاپی چاههی تلاشهایی
شتابهایی تابیی
چاپی راهی تلاشهایی
که کتابهایی
که کلاههایی که
کتابهایی

Engine: XeTeX using xepersian,
Style: Sayeh,
Kashida: leaders+hrule On

راهی جایابی کتابی
چاپی چاههی قلاشهای
شتابهایابی کتابی
چاپی راهی قلاشهای
که کتابهایابی
که کلاهایابی که
کتابهایابی

Engine: XeTeX using xepersian,
Style: Navaar,
Kashida: leaders+hrule On

راهی جایابی تابوی
چاپی چاههی تلاشهای
شتابهای تابوی
چاپی راهی تلاشهای
که کتابهای
که کلاههای که
کتابهای

XePersianHM
Example of Use

Engine: XeTeX using xepersian-hm

Kashida=glyph

File: TEXMFDIST/doc/xelatex/xepersian-hm/xepersian-hm-glyph.tex

Font: HM XKayhan
Font Scale: 4.5
linebreakpenalty: 8
kashidastretch: 0.14em plus 5.5em
color: red

Engine: XeTeX using xepersian-hm,
Style: Regular,
Kashida: Off

راهی جایی تابی چاپی
چاههی تلاشهایی
شتابهایی تابی چاپی
راهی تلاشهایی که
کتابهایی که کلاههایی
که کتابهایی

Engine: XeTeX using xepersian-hm,
Style: Regular,
Kashida: glyph (0n)

راهی جایی تابی چاپی
چاههی تلاشهای
شتابهای تابی چاپی
راهی تلاشهایی که
کتابهایی که کلاههایی
که کتابهایی

Engine: XeTeX using xepersian-hm,
Style: Italic,
Kashida: glyph (0n)

راهی جایی تابی چاپی
چاههی تلاشهایی
شتابهایی تابی چاپی
راهی تلاشهایی که
کتابهایی که کلاههایی
که کتابهایی

Engine: XeTeX using xepersian-hm,
Style: Oblique,
Kashida: glyph (0n)

راهی جایی تابی چاپی
چاههی تلاشهای
شتابهای تابی چاپی
راهی تلاشهایی که
کتابهایی که کلاههایی
که کتابهایی

Engine: XeTeX using xepersian-hm,
Style: Outline,
Kashida: glyph (0n)

راهی جایابی چایی
چاههی تلاشهایی
شتابهایی تابی چایی
راهی تلاشهایی که
کتابهایی که کلاههایی
که کتابهایی

Engine: XeTeX using xepersian-hm,
Style: Shadow,
Kashida: glyph (0n)

راهی جایی تابی چایی
چاههی تلاشهایی
شتابهایی تابی چایی
راهی تلاشهایی که
کتابهایی که کلاههایی
که کتابهایی

Engine: XeTeX using xepersian-hm,
Style: Pook,
Kashida: glyph (0n)

راهی جای تابی
چاپی چاهری
تلاشهایی شتابهایی
تابی چاپی راهی
تلاشهایی
که کتابهایی
که کلاههایی که
کتابهایی

Engine: XeTeX using xepersian-hm,
Style: Sayeh,
Kashida: glyph (0n)

راهی جایی تابی
چاپی چاههی
تلاشهای شتابهای
تابی چاپی راهی
تلاشهای پای که
کتابهای که
کلاههای که
کتابهای

Engine: XeTeX using xepersian-hm,
Style: Navaar,
Kashida: glyph (0n)

راهی جایی تابی
چاپی چاهری
تلاشهایی شتابهایی
تابی چاپی راهی
تلاشهای پای
که کتابهایی
که کلاههایی که
کتابهایی

XePersianHM

Example of Use

Engine: XeTeX using xepersian-hm

Kashida=leaders+glyph

File: TEXMFDIST/doc/xelatex/xepersian-hm/xepersian-hm-leaders-glyph.tex

Font:	HM XKayhan
Font Scale:	4.5
linebreakpenalty:	8
kashidastretch:	0.14em plus 5.5em
color:	red

Engine: XeTeX using xepersian-hm,
Style: Regular,
Kashida: Off

راهی جایی تابی چاپی
چاههی تلاشهایی
شتابهایی تابی چاپی
راهی تلاشهایی که
کتابهایی که کلاههایی
که کتابهایی

Engine: XeTeX using xepersian-hm,
Style: Regular,
Kashida: glyph (0n)

راهی جایی تابی چاپی
چاههی تلاشهایی
شتابهایی تابی چاپی
راهی تلاشهایی که
کتابهایی که کلاههایی
که کتابهایی

Engine: XeTeX using xepersian-hm,
Style: Italic,
Kashida: glyph (0n)

راهی جایی تابی چاپی
چاههی تلاشهایی
شتابهایی تابی چاپی
راهی تلاشهایی که
کتابهایی که کلاههایی
که کتابهایی

Engine: XeTeX using xepersian-hm,
Style: Oblique,
Kashida: glyph (0n)

راهی جایی تابی چاپی
چاههی تلاشهای
شتابهای تابی چاپی
راهی تلاشهایی که
کتابهایی که کلاههایی
که کتابهایی

Engine: XeTeX using xepersian-hm,
Style: Outline,
Kashida: glyph (0n)

راهی جایابی چاپی
چاهری تلاشهایی
شتابهایی تابی چاپی
راهی تلاشهایی که
کتابهایی که کلاههایی
که کتابهایی

Engine: XeTeX using xepersian-hm,
Style: Shadow,
Kashida: glyph (0n)

راهی جایی تابی چایی
چاههی تلاشهایی
شتابهایی تابی چایی
راهی تلاشهایی که
کتابهایی که کلاههایی
که کتابهایی

Engine: XeTeX using xepersian-hm,
Style: Pook,
Kashida: glyph (0n)

راهی جایابی تابی
چاپی چاهری
تلاشهایی شتابهایی
تابی چاپی راهی
تلاشهایی
که کتابهایی
که کلاههایی که
کتابهایی

Engine: XeTeX using xepersian-hm,
Style: Sayeh,
Kashida: glyph (0n)

راهی جایی تابی
چاپی چاههی
تلاشهای شتابهای
تابی چاپی راهی
تلاشهای پای که
کتابهای که
کلاههای که
کتابهای

Engine: XeTeX using xepersian-hm,
Style: Navaar,
Kashida: glyph (0n)

راهی جایی تابی
چاپی چاهری
تلاشهایی شتابهایی
تابی چاپی راهی
تلاشهای پای
که کتابهایی
که کلاههایی که
کتابهایی

XePersianHM

Example of Use

Engine: XeTeX using xepersian-hm

Kashida=leaders+hrule

File: TEXMFDIST/doc/xelatex/xepersian-hm/xepersian-hm-leaders-hrule.tex

Font:	HM XKayhan
Font Scale:	4.5
linebreakpenalty:	8
kashidastretch:	0.14em plus 5.5em
color:	red

Engine: XeTeX using xepersian-hm,
Style: Regular,
Kashida: Off

راهی جایی تابی چاپی
چاههی تلاشهایی
شتابهایی تابی چاپی
راهی تلاشهایی که
کتابهایی که کلاههایی
که کتابهایی

Engine: XeTeX using xepersian-hm,
Style: Regular,
Kashida: glyph (0n)

راهی جایی تابی چاپی
چاههی تلاشهایی
شتابهایی تابی چاپی
راهی تلاشهایی که
کتابهایی که کلاههایی
که کتابهایی

Engine: XeTeX using xepersian-hm,
Style: Italic,
Kashida: glyph (0n)

راهی جایی تابی چاپی
چاههی تلاشهایی
شتابهایی تابی چاپی
راهی تلاشهایی که
کتابهایی که کلاههایی
که کتابهایی

Engine: XeTeX using xepersian-hm,
Style: Oblique,
Kashida: glyph (0n)

راهی جایی تابی چاپی
چاههی تلاشهای
شتابهای تابی چاپی
راهی تلاشهایی که
کتابهایی که کلاههایی
که کتابهایی

Engine: XeTeX using xepersian-hm,
Style: Outline,
Kashida: glyph (0n)

راهی جایابی تابی چاپی
چاهری تلاشهایی
شتابهایی تابی چاپی
راهی تلاشهایی که
کتابهایی که کلاههایی
که کتابهایی

Engine: XeTeX using xepersian-hm,
Style: Shadow,
Kashida: glyph (0n)

راهی جایی تابی چایی
چاهه‌هی تلاش‌هایی
شتاب‌هایی تابی چایی
راهی تلاش‌هایی که
کتاب‌هایی که کلاه‌هایی
که کتاب‌هایی

Engine: XeTeX using xepersian-hm,
Style: Pook,
Kashida: glyph (0n)

راهی جایابی تابی
چاپی چاهری
تلاشهایی شتابهایی
تابی چاپی راهی
تلاشهرایی
که کتابهایی
که کلاههایی که
کتابهایی

Engine: XeTeX using xepersian-hm,
Style: Sayeh,
Kashida: glyph (0n)

راهی چاپی کتابی
چاپی چاههای
تلاشهای شتابهای
تابی چاپی راهی
تلاشهای پای که
کتابهای که
کلاهای پای که
کتابهای

Engine: XeTeX using xepersian-hm,
Style: Navaar,
Kashida: glyph (0n)

راهی جایی تابی
چاپی چاهری
تلاشهایی شتابهایی
تابی چاپی راهی
تلاشهای چاپی
که کتابهایی
که کلاههایی که
کتابهایی